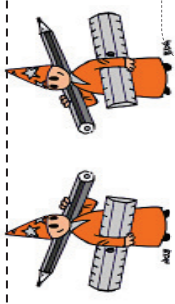


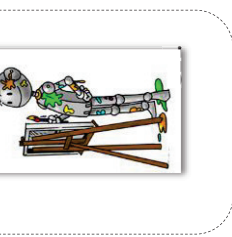
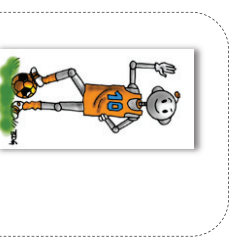
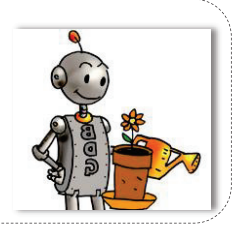
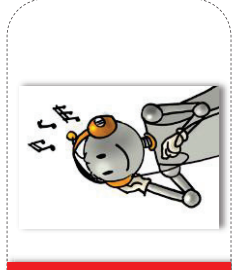
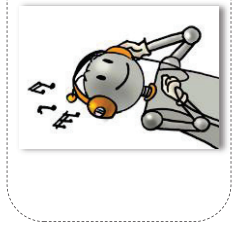
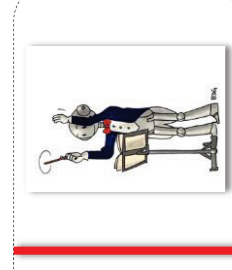
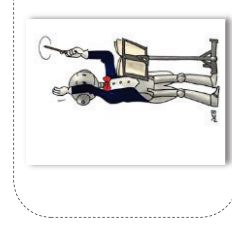
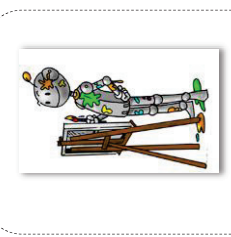
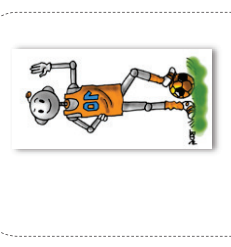
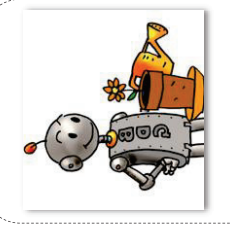
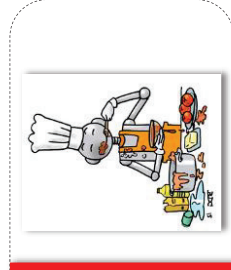
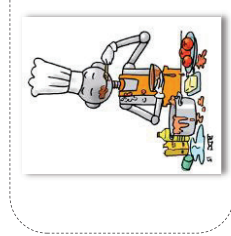
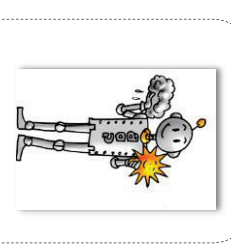
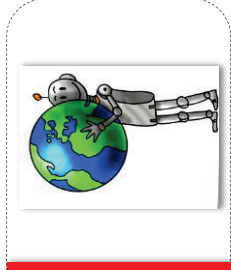
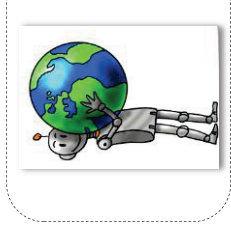
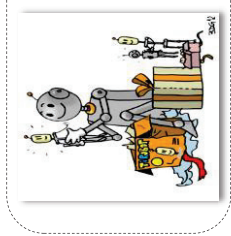
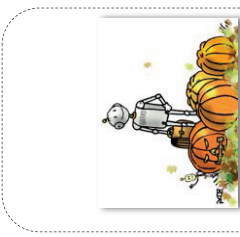
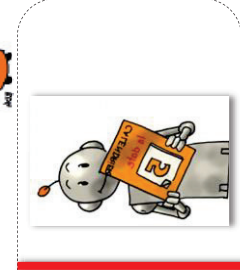
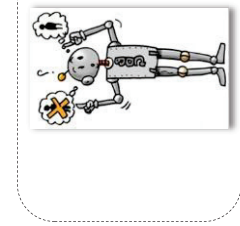
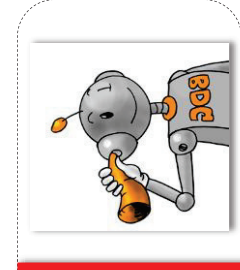
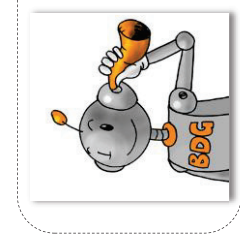
# Géométrie

Fiche 1

## La symétrie



1 Entoure les paires qui sont symétriques.

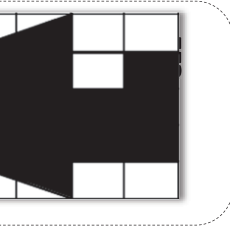
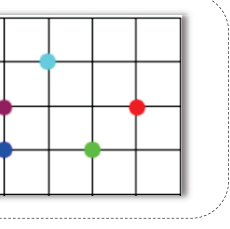
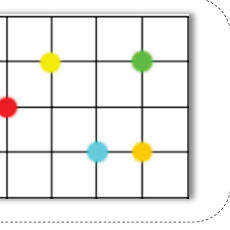
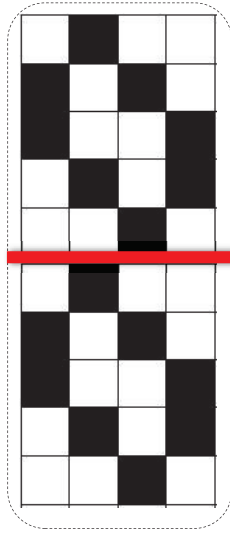
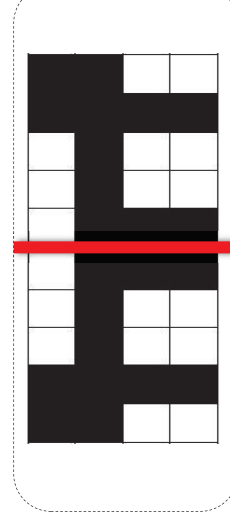
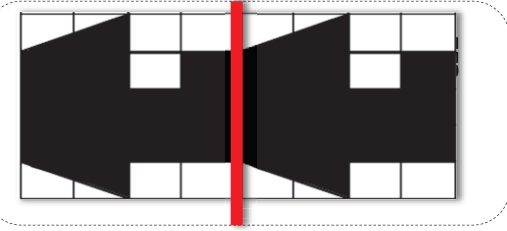
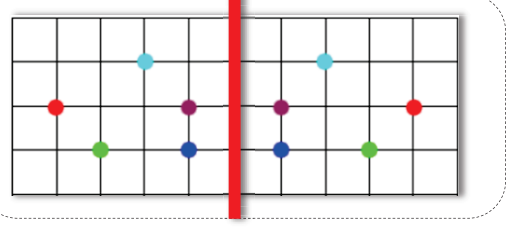
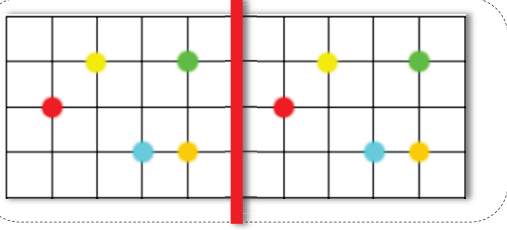
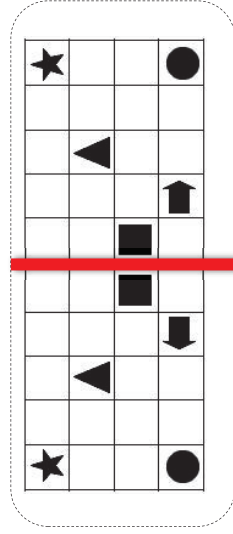
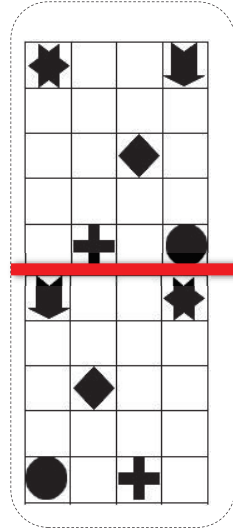
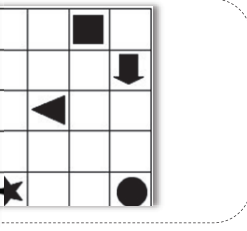
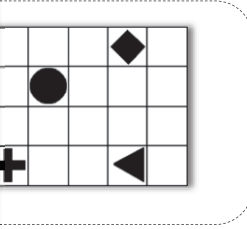
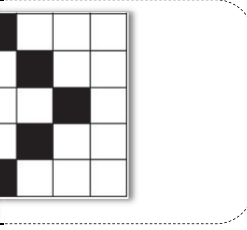
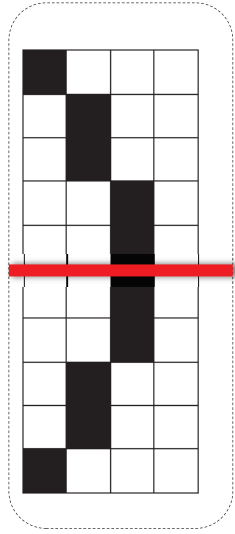
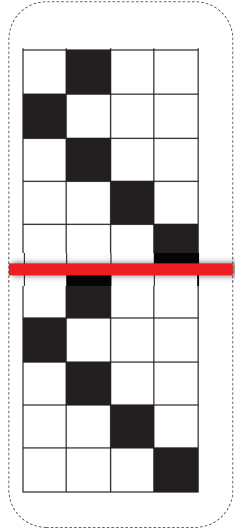
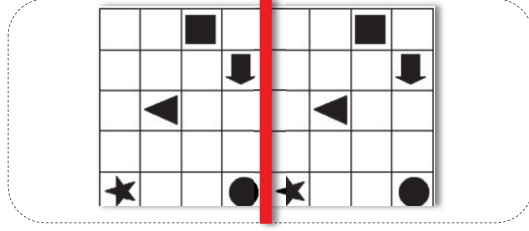
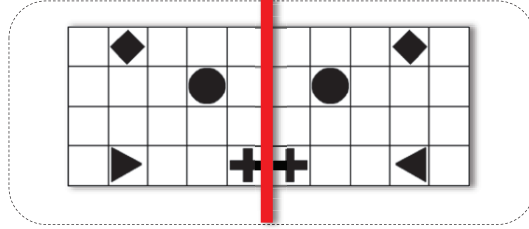
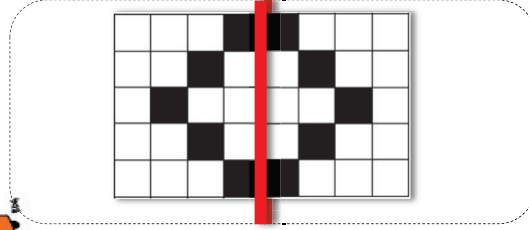
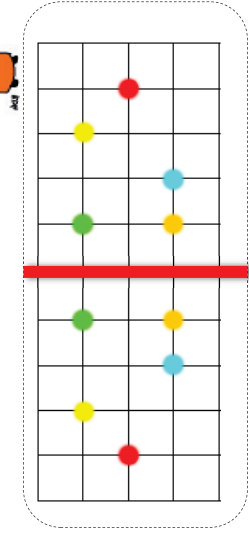
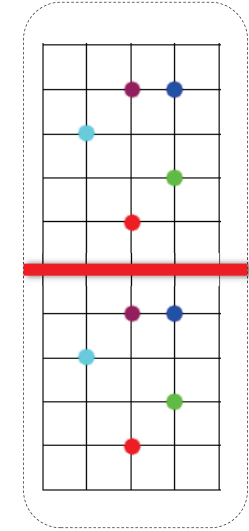
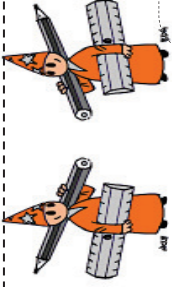


# Géométrie

Fiche

## La symétrie

1 Entoure les raines qui sont symétriques.





# Géométrie

Fiche

## La symétrie



1 Choisis le symétrique par rapport à l'axe.

1

Exercise 1: Symmetry across a horizontal axis.

Original grid (left):

		●		
	▲	■	▶	
★				

Axial line (red):


Options:

		●		
	▲	■	▶	
★				

		★		
		■		
	▲		▶	
●				

Exercise 2: Symmetry across a horizontal axis.

Original grid (left):

		★		
	■			
	▲		▶	
●				

Axial line (red):


Options:

		★		
		■		
	▲		▶	
●				

		●		
		■		
	▲		▶	
★				

Exercise 3: Symmetry across a vertical axis.

Original grid (left):

		▲		
	■		●	
★			▶	

Axial line (red):


Options:

		▲		
	■		●	
★			▶	

		▲		
	■		●	
			▶	★

Exercise 4: Symmetry across a horizontal axis.

Original grid (left):

		●		
	▲	■	▶	
★				

Axial line (red):


Options:

		●		
	▲	■	▶	
★				

		★		
		■		
	▲		▶	
●				

Exercise 5: Symmetry across a horizontal axis.

Original grid (left):

		●		
	▲		▶	
★				

Axial line (red):


Options:

		●		
	▲		▶	
★				

		★		
		■		
	▲		▶	
●				

Exercise 6: Symmetry across a vertical axis.

Original grid (left):

		●		
	▲		▶	
★				

Axial line (red):


Options:

		●		
	▲		▶	
★				

		●		
	▲		▶	
			★	

Exercise 7: Symmetry across a vertical axis.

Original grid (left):

		●		
	▲		▶	
★				

Axial line (red):


Options:

		●		
	▲		▶	
★				

		●		
	▲		▶	
			★	